



FAIRY
BOUTIQUE



Fig. 1. Cuvette
2. Morceau de terre aplani
3. La même terre en forme sur un rouleau
4. Crêpset

Fairy Boutique-Album Kit

Everything you need - including an album, decorative papers, embellishments, and step-by-step instructions! Just add adhesive.



4503148

Fairy Boutique – Tag & Pocket Wrap-Around Album

Designed by ~ Carla La Vera

Graphic 45® Supplies:

1 pk <i>Fairy Boutique</i> 12 x 12 Collection Pack	(4503044)
1 pk <i>Fairy Boutique</i> Sticker Set	(4503046)
1 pk <i>Fairy Boutique</i> Chipboard Pieces, Tags & Frames	(4503048)
1 ea Square Tag & Pocket Wrap-Around Album	(4502963)

Tools, Adhesives & Ink:

Paper trimmer, scissors, scoring tool, bone folder, craft knife, ruler, pencil, various adhesives corner rounder punch, Optional: coordinating ink and applicator

Notes:

- All measurements are width x height, unless specified.
- When cutting papers, be mindful of the pattern direction.
- If desired, use coordinating ink to distress paper edges.

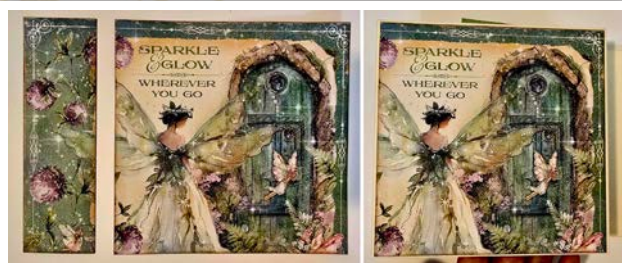
Directions:

Optional: Ink the edges with light brown ink, or another color to give the album a distressed look.

- Album Cover:



1. Cut a 5¼" x 6" of *Enchanted Frocks* paper, then, trim 2⅝" of the left section and add it to the cover's flap, then, add the right section to the right spine.



2. Take the *Fairy Boutique* and trim the central design (7⅞" x 6") as shown, then, trim 6" from the right section and add it to the front cover and add the left section to the left spine.

3. Cut a ⅞" x 6" piece of *Lilac Lavender* Pattern & Solid (P&S) sheet and add



it to the left section of the left spine. Cut a 6" x 6" piece of *Lilac Lavender* and add it to the back cover.



4. Cut a 4⅞" x 6" piece of *Enchanted Frocks* and add it to the left section of the inside of the front cover. Cut a 1½" x 6" piece of *Lilac Lavender* and add it to the right section of the inside of the front cover.

5. Cut a 3⅝" x 6" piece of *Lilac Lavender* and add it to the left section of the inside of the back cover. Cut 2⅝" x 6" of *Enchanted Frocks* and add it to the right section of the inside of the back cover.

Fairy Boutique – Tag & Pocket Wrap-Around Album



6. Cut a 2 $\frac{5}{8}$ " x 6" piece of *Fairy Boutique*, trim it from the left card (border) and add it inside of the right spine.

• We will decorate the front cover and spine after we finish all the album pages. To continue with the album, number each page with a pencil. There are 24 pages.



7. Cut a 1 $\frac{1}{2}$ " x 5 $\frac{3}{8}$ " piece of *Lilac Lavender* sheet and add it to the left edge of page 1. Cut a 6 $\frac{3}{8}$ " x 5 $\frac{3}{8}$ " piece of *Fairy Boutique* (as shown), score a line at 3 $\frac{3}{4}$ " in the 6 $\frac{3}{8}$ " direction, fold the right section upon the score line and add the left section to the right of the page 1.

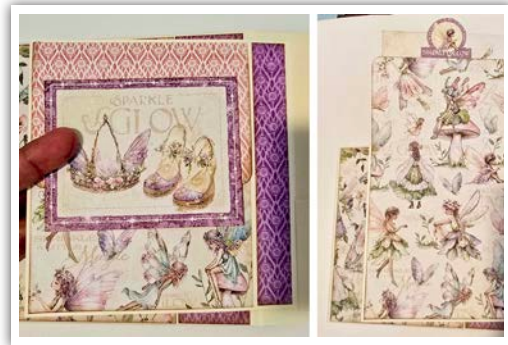


8. Trim the card shown (4" x 4 $\frac{1}{4}$ "), round the corners and add it to a square tag. Add this tag to the flap of the page 1, then add a round sticker on the hole and add the little fairy sticker to the opposite side of the tag.



9. Cut a 4 $\frac{1}{2}$ " x 8 $\frac{3}{8}$ " piece of *Woodland Sprites*, score a line at 3" from the upper edge, fold

the upper section upon the score line, round the corner of the upper flap and add this piece to the left section of the page 2.



10. Cut a $\frac{7}{8}$ " x 5 $\frac{3}{8}$ " piece of *Lilac Lavender* and add it to the right section of page 2. Trim the card shown

(*Sprinkle a Little Magic*) and add it to the upper flap. Open the upper flap and add the sticker shown.

• The pages 8, 14 and 20 are the same as page 2.



11. Page 8: Follow step 9 using a 4 $\frac{1}{2}$ " x 8 $\frac{3}{8}$ " of *Pixie Town* and follow step 10 using a $\frac{7}{8}$ " x 5 $\frac{3}{8}$ "

piece of *Spring Green* (P&S) and the cards shown.

Fairy Boutique – Tag & Pocket Wrap-Around Album



12. Page 14: Follow step 9 using a 4½" x 8⅜" of *Enchanted Frocks* paper and follow step 10 using a ⅞" x

5⅝" piece of *Lilac Lavender* and the card shown.

13. Page 20: Follow step 9 using a 4½" x 8⅝" of *Woodland Sprites*. Follow step 10 using a ⅞" x 5⅝" piece of *Spring Green*



14. Cut a 5⅝" x 3⅛" piece of *Woodland Sprites* and adhere to upper section of page 3. Trim 5⅝" of the green border (*Sprinkle a Little Magic*) adhere to the upper edge of the pocket. Cut a 5⅝" x 1⅝" piece of *Lilac Lavender* and adhere to the pocket.

15. The page 15 is like Page 3. Follow the step 14 using a 5⅝" x 3⅛" piece of *Enchanted Frocks* (b-side), the green border and a 5⅝" x 1⅝" piece of *Lilac Lavender*.



16. Cut a 5⅝" x 2⅛" piece of *Lilac Lavender* and add it to the pocket on page 4. Trim the card shown (*Sprinkle a Little Magic*) to get 5⅝" x 3⅛" piece and add it to the upper section of page 4.



• The pages 10 and 22 are like page 4.



17. Page 10: Follow the instructions of step 16 using a 5⅝" x 2⅛" piece of *Spring Green* and the card shown.

18. Page 22: Follow the instructions of step 16 using a 5⅝" x 2⅛" piece of *Spring Green* and the card shown.



19. Cut a 7½" x 5⅝" piece of *Woodland Sprites* and score a line at 4¼" in the 7½" direction, fold



the right section upon the score line, round the corners and add the left section to the right side of the page 5.

Fairy Boutique – Tag & Pocket Wrap-Around Album

20. Cut a 1" x 5³/₈" piece of *Lilac Lavender* and add it to the left section of page 5. To decorate, add the Small purple frame and a Fairy Dress (Stickers) to the lateral flap as shown.

- Pages 11, 17 and 23 are like page 5.



21. Page 11: Follow steps 19 and 20 using a 7¹/₂" x 5³/₈" piece of *Pixie Town* (b-side) and a 1" x 5³/₈" piece of *Spring Green* and decorate it with the green tag.

22. Page 17: Follow steps 19 and 20 using a 7¹/₂" x 5³/₈" piece of *Enchanted Frocks* and a 1" x 5³/₈" piece of *Lilac Lavender*. Decorate it with a purple frame and a Fairy dress (stickers)



25. Take the right border of the *Fairy Boutique* (fussy cut the shoes of the bottom section. Trim 5³/₈" of the upper section of the border and add it to the left section of page 6. Cut 5³/₈" of the bottom section of the border and add it to the right section of page 7.

26. Next is the pocket on page 9. Cut a 5³/₈" x 3¹/₈" piece of *Pixie Town* (b-side) and add it to the upper section of this page. Trim 5³/₈" of the pink and green border (*Sprinkle a Little Magic*) and add it to the upper section of the pocket, finally, cut a 5³/₈" x 1¹/₂" piece of *Spring Green* paper and add it to the pocket.



23. Page 23: Follow steps 19 and 20 using a 7¹/₂" x 5³/₈" of *Pixie Town* and 1" x 5³/₈" piece of *Spring Green* paper. Decorate it with the white tag shown.



27. The pocket on page 21 is like the pocket on page 9, using 5³/₈" x 3¹/₈" piece of *Woodland Sprites* instead of the *Pixie Town*.

24. Pages 6 and 7 have the same design. Cut two 3⁷/₈" x 5³/₈" pieces of *Spring Green*, add one to the right section of page 6 and add the second to the left section of page 7.

28. Pages 12 and 13 have the same design. Cut two 5³/₈" x 3¹/₄" pieces of *Enchanted Frocks* and add both pieces to the upper section of the pages 12 and 13.

Fairy Boutique – Tag & Pocket Wrap-Around Album



Cut the border shown (*Sprinkle a Little Magic*), trim two 5 $\frac{5}{8}$ " pieces and add them to the bottom section of the pages 12 and 13.

29. For the pocket on Page 16, cut a 5 $\frac{5}{8}$ " x 3 $\frac{1}{8}$ " piece of *Enchanted Frocks* and add it to the upper section of the page. Cut a 5 $\frac{5}{8}$ " x 2 $\frac{1}{8}$ " piece of *Lilac Lavender* and add it to the pocket.



30. Pages 18 and 19 have the same design too. Cut two 5 $\frac{5}{8}$ " x 4 $\frac{1}{4}$ " of *Pixie Town* and add both pieces to the upper section of the Pages 18 and 19. Trim two 5 $\frac{5}{8}$ " pieces of the border shown (*Sprinkle a Little Magic*) and add both to the bottom section of the pages 18 and 19.

31. The last page we must do is the 24 and this is like Page 1. Cut a 1" x 5 $\frac{5}{8}$ " piece of *Lilac Lavender* and add it to the right edge of page 1. Cut an 8" x 5 $\frac{5}{8}$ " piece of *Fairy Boutique* (as shown), score a line at 3 $\frac{5}{8}$ " in the 8"

direction, fold the left section upon the score line and add the right section to the left of the page 24.



32. Trim the card shown (*Sprinkle a Little Magic*), round the corners and add it to a square tag. Add this tag to the flap of page 24, then add a small rose (Tags and Frames) on the hole and add the little fairy sticker to the opposite side of the tag.



33. Take 4 cards of your choice and trim them to get 4" x 4" and add them to the tags. I used some by the main side and a couple of cards by the notes side. You can insert these tags in any pocket.



34. Cut four 4 $\frac{1}{2}$ " x 5" pieces of the pattern and solids or the papers of your choice to do some

mats to insert into the lateral pockets. Round the

Fairy Boutique – Tag & Pocket Wrap-Around Album

corners of these pieces. Grab the tags shown (Tags and Frames) and add them to the upper right edge like tabs. Insert these elements into the lateral pockets.



35. Cut five ½" x 6" pieces of *Lilac Lavender* and add them to the spine between the sets of pages



36. We are going to embellish the cover to finish this album. Add the Big turquoise frame to the right flap. Add the big Turquoise Tag to the bottom section of the frame, then, add the roses and the fairies as shown.

37. Add the sticker shown and the roses (Tags and Frames) to the left spine.



There are many cards and remaining papers that you can use to create more inserts or photo mats to give your own touch to your album.



You've completed the Fairy Boutique Square Tag & Pocket Wrap-Around Album!
Shown with the coordinating Fairy Boutique Card Set which are also available. (Sold separately)