



Deck the Halls-Card Kit

Everything you need - including card bases, decorative papers, embellishments, and step-by-step instructions! Just add adhesive.



4503180

Deck the Halls – Layered Dimensional Card Set

Designed by ~ Carla La Vera

Graphic 45® Supplies:

1 pk <i>Deck the Halls</i> 8 x 8 Collection Pack	(4503092)
1 pk <i>Deck the Halls</i> Ephemera Set	(4503096)
1 pk <i>Deck the Halls</i> Rub-On Transfers	(4503098)
1 pk 5" x 7" A7 Cards & Envelopes—Ivory	(4502655)

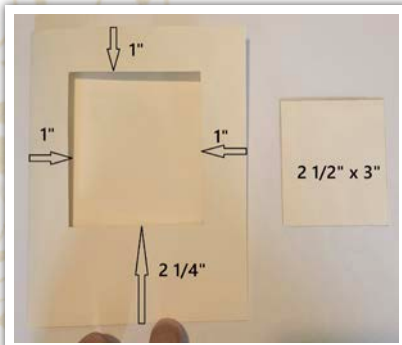
Tools, Adhesives & Ink:

Paper trimmer, ruler, scissors, scoring tool, bone folder, craft knife, various adhesives
Optional: coordinating ink & applicator

Notes:

- All measurements are width x height, unless specified.
- When cutting papers, be mindful of the pattern direction.
- These directions are for three cards. The steps are fun and simple. You can create three more cards following the same steps, using the remaining supplies and papers!
- These are fun layered cards! First we are going to create a deep effect by trimming a frame, then, we are going to give it volume with the Ephemera elements. Inside there is a pop-up card with a message and enough room to write your wishes.

Directions:



1. Take the cards and trim $\frac{1}{4}$ " in the 7" direction (our card will have volume and doing this it is going to fit perfectly into the envelopes).

2. Trim a rectangle off on the cover page of the card as shown. Take the rectangle

trimmed and trim it to get a $2\frac{1}{2}$ " x 3" piece.

~ Card No. 1.

1. Cut a $4\frac{5}{8}$ " x $6\frac{7}{8}$ " piece of *Calm and Bright* paper. Open the card and add this piece to the left section of the card

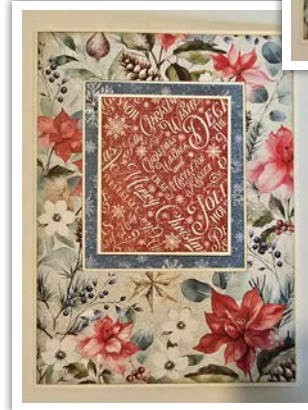
facing the main side down. When you close the card you will see the main side though the window trimmed.



2. Cut a $4\frac{5}{8}$ " x $6\frac{7}{8}$ " piece of *Mistletoe Kisses*. Trim a frame as shown and add this piece to the front page of the card.



3. Cut a $2\frac{3}{8}$ " x $2\frac{7}{8}$ " piece of the *Poinsettia Red* Pattern & Solids (referred to as P&S) paper and add it to the ivory cardstock trimmed in the general instructions, then add it to the window giving it volume with foam dots or chipboard squares (left over from other projects).



Deck the Halls – Layered Dimensional Card Set



4. Add the Ephemera elements shown to the front page of the card giving them volume with foam dots or small chipboard pieces.



5. Open the card and add the piece trimmed from the *Mistletoe Kisses* and add it to the left section of the card. Cut a $1\frac{1}{2}$ " x $6\frac{5}{8}$ " piece of

Calm and Bright and add it to the right side of the card.



6. Trim $5\frac{3}{4}$ " of the border shown (*Jolly Holidays*), score 3 lines and fold it as shown.

Add the section d to the right section of the card, close to the folded middle of the card and leaving $2\frac{1}{4}$ " from the upper edge. Add the section a to the left section of the card allowing it to properly close the card.



7. Add the card shown to the border, close to the right score line and add the Ephemera elements to the card.

8. Rub-on the elements shown to the right section of the card.

9. Cut a 7 " x 2 " piece of *Calm and Bright*, trim the lateral edges to fit in the envelope's flap and add it. Add a stamp and the embellishment (Ephemera Set) to the bottom left corner of the front side of the envelope.

~ Card No. 2.

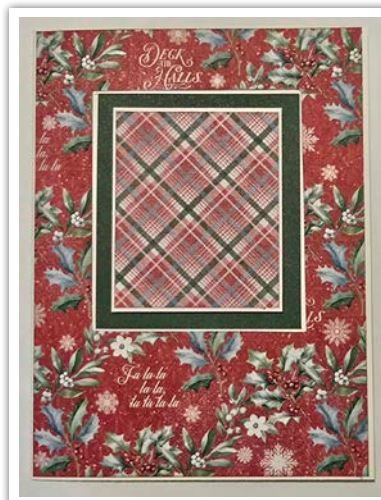


1. Cut a $4\frac{5}{8}$ " x $6\frac{5}{8}$ " piece of the *Holly Green P&S*. Open the card and add this piece to the left section of the card facing the solid

color side down. When you close the card, you will see the green side though the window trimmed.

2. Cut a $4\frac{5}{8}$ " x $6\frac{5}{8}$ " piece of *A Little Sparkle*. Trim a frame as shown and add this piece to the front page of the card.

3. Cut a $2\frac{3}{8}$ " x $2\frac{3}{8}$ " piece of the *Mistletoe Kisses* (back) and add it to the



Deck the Halls – Layered Dimensional Card Set

ivory cardstock trimmed in the general instructions, then, add it to the window giving it volume with foam dots or chipboard squares.



4. Add the Ephemera elements shown to the front page of the card giving them volume with foam dots or small chipboard pieces.

5. Open the card and add the piece trimmed from the *A Little Sparkle* and add it to the left section of the card leaving 1" from the upper edge and ¼" from the left edge. Cut a 1" x 6½" piece of *Boughs of Holly* and add it to the right section of the card.



6. Trim 5¼" of the border shown (*Jolly Holidays* paper), score 3 lines and fold it as shown. Add the section "d" to the right section of the card, close to the folded middle of the card and leaving 2¼" from the upper edge. Add the section "a" to the left section of the card allowing it to properly close the card.

7. Add the card shown to the border close to the right score line and add the Ephemera elements as shown.



8. Rub-on the elements shown to the right section of the card.

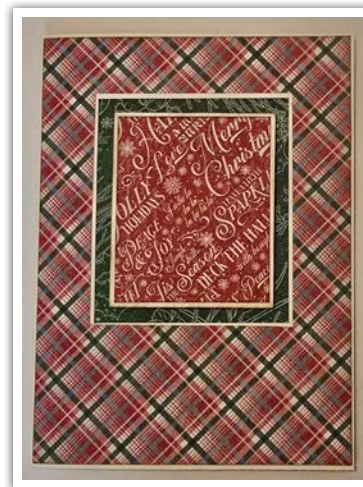
9. Cut a 7" x 2" piece of *A Little Sparkle*, trim the lateral edges to fit in the envelope's flap and add it. Add a stamp and the embellishment from the Ephemera Set to the bottom left corner of the front side of the envelope.

~ Card No. 3.



1. Cut a 4½" x 6½" piece of *Boughs of Holly*. Open the card and add this piece to the left section of the card facing the main side

down. When you close the card, you will see the main side though the window trimmed.



2. Cut a 4½" x 6½" piece of *Mistletoe Kisses* (back). Trim a frame as shown and add this piece to the front of the card.

3. Cut a 2½" x 2½" piece of *Poinsettia Red* P&S and add it to the ivory cardstock trimmed in the general instructions, then, add it to the window giving it volume with foam dots or chipboard squares.

Deck the Halls – Layered Dimensional Card Set



4. Add the Ephemera elements shown to the front page of the card giving them volume with foam dots or small chipboard pieces.

5. Open the card and add the piece trimmed from the *Mistletoe Kisses* and add it to the left section of the card leaving 1" from the upper edge and ¼" from the left edge. This time I added this piece in the horizontal direction. Cut a 1" x 6½" piece of *Boughs of Holly* and add it to the right section of the card.

6. Trim 5¾" of the border shown (*Jolly Holidays*), score 3 lines and fold it as shown on card 1. Add the section "d" to the right section of the card, close to the folded middle of the card and leaving 2¼" from the upper edge. Add the section "a" to the left section of the card allowing it to properly close the card.



7. Add the card shown to the border close to the right score line and add the Ephemera elements to the card.

8. Rub-on the elements shown to the right side.

9. Cut a 7" x 2" piece of *Boughs of Holly*, trim the lateral edges to fit in the envelope's flap and add it. Add a stamp and the embellishment (Ephemera Set) to the bottom left corner of the front side of the envelope.

You've completed the first three cards of the *Deck the Halls* Card Set! An additional three cards can be created using additional supplies in the kit. See the images below for inspiration!

Card Set shown here with the
Deck the Halls Rectangle Policy Envelope Album!
(Available separately)



Deck the Halls – Layered Dimensional Card Set



Cutting Guide

Measurements are width x height

These are the papers we are going to use to make the 3 first cards. We need the cards of *Joy & Delight* paper and the borders of *Jolly Holidays* paper.

Calm and Bright paper.

4⁵/₈" x 6⁵/₈" Step 1 – Card No. 1

1¹/₂" x 6⁵/₈" Step 5 – Card No. 1

7" x 2" Step 9 – Card No. 1

Mistletoe Kisses paper

4⁵/₈" x 6⁵/₈" Step 2 – Card No. 1

2³/₈" x 2⁵/₈" (back) Step 3 – Card No. 2

4⁵/₈" x 6⁵/₈" (back) Step 2 – Card No. 3

A Little Sparkle paper

4⁵/₈" x 6⁵/₈" Step 2 – Card No. 2

7" x 2" – Step 9 – Card No. 2

Boughs of Holly paper

1" x 6⁵/₈" Step 5 – Card No. 2

4⁵/₈" x 6⁵/₈" Step 1 – Card No. 3

1" x 6⁵/₈" Step 5 – Card No. 3

7" x 2" – Step 9 – Card no. 3

Poinsettia Red Pattern & Solid

2³/₈" x 2⁵/₈" Step 3 – Card No. 1

2³/₈" x 2⁵/₈" Step 3 – Card No. 3

Holly Green Pattern & Solid

4⁵/₈" x 6⁵/₈" Step 1 – Card No. 2