

graphic 45
unique papercrafting

C A R D K I T



ALWAYS
AND
FOREVER



Always & Forever-Card Kit

Everything you need - including card bases, decorative papers, embellishments, and step-by-step instructions! Just add adhesive.



4503258

g45papers.com • ©2026 Graphic 45™

Always & Forever – Gift Holder Card Set

Designed by ~ *Maria Cole*

Graphic 45® Supplies:

1 pk <i>Always & Forever</i> 8 x 8 Collection Pack	(4503173)
1 pk <i>Always & Forever</i> Ephemera Set	(4503177)
1 pk <i>Always & Forever</i> Rub-On Transfers	(4503179)
1 pk A7 - 5" x 7" Cards & Envelopes—Ivory	(4502655)

Tools, Adhesives & Ink:

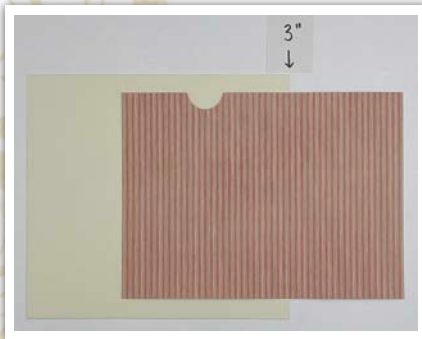
Paper trimmer, ruler, scissors, scoring tool, bone folder, 1" circle punch, various adhesives
Optional: coordinating ink & applicator

Notes:

- All measurements are width x height, unless specified.
- When cutting papers, be mindful of the pattern direction.
- These directions are for three cards. The steps are fun and simple. You can create three more cards following the same steps, using the remaining supplies and papers!

Directions:

~ Card No. 1. "Best Day Ever"



1. Take a card base and trim off a 7" square; trim to 7" x 6½". Score this piece vertically at 2½" from the left side. Take leftover card base and trim to 3" x 5½"; save this for step 5.

2. Find *Perfect Pink Pattern* and cut a 8" x 5½"; trim to 7½" x 5½". Score vertically at 3" from the right. Punch a semi-circle on the top of the paper, so it's centered between the left edge and score line. Adhere the left and right sides of the 4½" wide scored section to the right of the card base's score line.

3. Locate *Simply Divine* and cut (1) 2¼" x 6¼", (1) 2" x 6", and (1) 3¾" x 4½". Center and adhere the 2¼" wide piece to the left of the card base's score line. Flip 3¾" wide piece to the b-side and adhere over pink paper.

4. Remove 2⅝" x 4" "Celebrate" from *Journaling* (b-side) and adhere on top of *Simply Divine* paper, along with a small circle ephemera. Apply ornate oval frame rub-on image to the far right flap; adhere white heart ephemera.



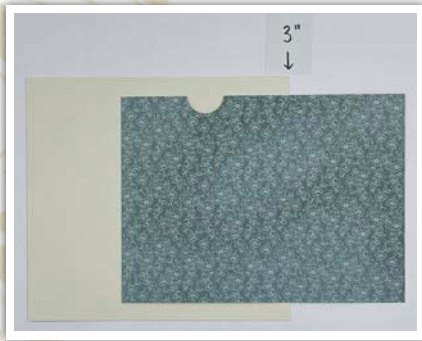
5. Take *From the Heart* (b-side) and cut (1) 2¼" x 6¼" and (1) 2¼" x 5¼". Center and adhere 2¼" wide piece over 3" x 5½" ivory card base. Cut a 2½" x 5" from leftover *Perfect Pink* (b-side); find 2" x 6" *Simply Divine*. Center and adhere papers over green paper.



Always & Forever – Gift Holder Card Set



~ Card No. 2. "Happy Birthday"



1. Repeat Card 1 Step 1.
2. Repeat Card 1 Step 2 using *Regency Blue Pattern & Solid*.

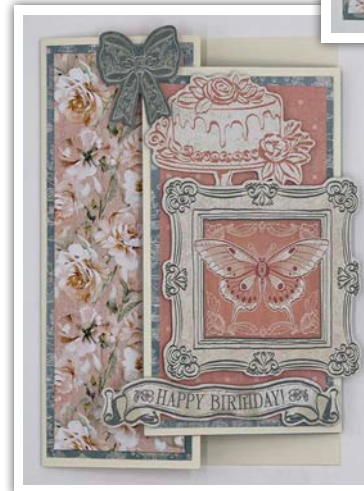
3. Locate *Timeless Floral*. Cut (1) $2\frac{1}{4}$ " x $6\frac{1}{4}$ ", (1) 2" x 6", and (1) $2\frac{1}{2}$ " x 5". Flip $2\frac{1}{4}$ " wide piece to the b-side, then center and adhere to the left of the card base's score line. Cut (1) $3\frac{3}{4}$ " x $4\frac{1}{2}$ " from *Light Layout*; adhere to blue paper.



6. Fold the score lines. Adhere $2\frac{1}{4}$ " wide mat to the left side; adhere other mat to the right. Attach oval frame, large cake, and "Best Day Ever" ephemera on the right side. Apply butterfly rub-ons. To keep the card closed, attach small cake ephemera with foam adhesive to the left side.

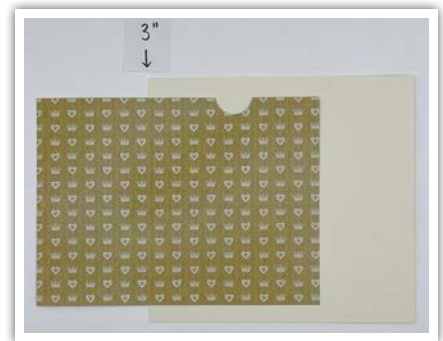
4. Repeat Card 1 Step 4 using pink paint splatter rub-on, along with pink heart and "Cheers to Many More" ephemera. From leftover *Journaling*, use "Cheers to You" and butterfly images as a whole $2\frac{3}{8}$ " x 4" piece; flip to b-side.

5. Repeat Card 1 Step 5 using *Always & Forever* (b-side) for the $2\frac{1}{4}$ " x $6\frac{1}{4}$ " and $2\frac{3}{4}$ " x $5\frac{1}{4}$ " mats. Add remaining *Timeless Floral* pieces from step 3 to the top of the blue paper, flipping the $2\frac{1}{2}$ " wide piece to the b-side.



~ Card No. 3. "Always & Forever"

1. Repeat Card 1 Step 1, but score the 7" x $6\frac{1}{2}$ " piece vertically at $2\frac{1}{2}$ " from the right side.
2. Find *Glorious Gold Pattern* and cut a 8" x $5\frac{1}{2}$ "; trim to $7\frac{1}{2}$ " x $5\frac{1}{2}$ ". Score vertically at



3" from the left. Punch a semi-circle on the top of the paper, so it's centered between the right edge and score line. Adhere the left and right sides of the $4\frac{1}{2}$ " wide scored section to the left of the card base's score line.

6. Repeat Card 1 Step 6 using tall white cake, framed butterfly, "Happy Birthday", and blue ribbon ephemera.

Always & Forever – Gift Holder Card Set

3. Locate *Festive Affair*. Cut (1) $2\frac{1}{4}$ " x $6\frac{1}{4}$ " and (1) 2" x 6". Center and adhere the $2\frac{1}{4}$ " wide piece to the right of the card's $2\frac{1}{2}$ " score line. Cut an 8" x $2\frac{1}{4}$ " strip from *Luxurious Green Pattern*; save for step 5. With remaining paper, cut a $3\frac{3}{4}$ " x $4\frac{1}{2}$ " and adhere to gold paper.



4. Repeat Card 1 Step 4 to the far left side using large cake rub-on and key ephemera. Add small circle ephemera and $2\frac{5}{8}$ " x 4" "Love" from leftover *Journaling* (b-side) to the center.

5. Repeat Card 1 Step 5 using leftover *Luxurious Green* (b-side) for the mats. Use 2" wide *Festive Affair* from step 3 and a $2\frac{1}{2}$ " x 5" piece from leftover *Glorious Gold* (b-side) to adhere over green paper.



6. Repeat Card 1 Step 6 using $2\frac{5}{8}$ " x 4" "Always & Forever" from leftover *Journaling*, "Celebrate" rub-on, large floral bunch, and blue butterfly ephemera on the left side, and small floral bunch ephemera on the right.

You've completed the first three cards of the *Always & Forever* Card Set! An additional three cards can be created using additional supplies in the kit. See the images on the front page and following page for inspiration!



Card Set shown below with the *Always & Forever* Memory Keeping Album! (Available separately)

Cutting Guide

Measurements are width x height

Cardstock - Ivory (sheet one)

(1) 7" x $6\frac{1}{2}$ " (Card 1 - Step 1)

(1) 3" x $5\frac{1}{2}$ " (Card 1 - Step 5)

Perfect Pink Pattern & Solid

(1) $7\frac{1}{2}$ " x $5\frac{1}{2}$ " (Card 1 - Step 2)

Perfect Pink Pattern & Solid (b-side)

(1) $2\frac{1}{2}$ " x 5" (Card 1 - Step 5)

Simply Divine

(1) $2\frac{1}{4}$ " x $6\frac{1}{4}$ " (Card 1 - Step 3)

(1) 2" x 6" (Card 1 - Step 5)

Simply Divine (b-side)

(1) $3\frac{3}{4}$ " x $4\frac{1}{2}$ " (Card 1 - Step 3)

Journaling (b-side)

(1) $2\frac{5}{8}$ " x 4" "Celebrate" (Card 1 - Step 4)

Always & Forever – Gift Holder Card Set

~ Inside of Card No. 4. “Congratulations”



From the Heart (b-side)

- (1) 2¼" x 6¼" (Card 1 – Step 5)
- (1) 2¾" x 5¼" (Card 1 – Step 5)

Cardstock - Ivory (sheet two)

- (1) 7" x 6½" (Card 2 – Step 1)
- (1) 3" x 5½" (Card 2 – Step 5)

Regency Blue Pattern & Solid

- (1) 7½" x 5½" (Card 2 – Step 2)

Timeless Floral

- (1) 2" x 6" (Card 2 – Step 5)

Timeless Floral (b-side)

- (1) 2¼" x 6¼" (Card 2 – Step 3)
- (1) 2½" x 5" (Card 2 – Step 5)

Light Layout

- (1) 3¾" x 4½" (Card 2 – Step 3)

Journaling (b-side)

- (1) 2⅝" x 4" (“Cheers to You”) (Card 2 – Step 4)

Always & Forever (b-side)

- (1) 2¼" x 6¼" (Card 2 – Step 5)
- (1) 2¾" x 5¼" (Card 2 – Step 5)

Cardstock - Ivory (sheet three)

- (1) 7" x 6½" (Card 3 – Step 1)
- (1) 3" x 5½" (Card 3 – Step 5)

Glorious Gold Pattern & Solid

- (1) 7½" x 5½" (Card 3 – Step 2)

Glorious Gold Pattern & Solid (b-side)

- (1) 2½" x 5" (Card 3 – Step 5)

Festive Affair

- (1) 2¼" x 6¼" (Card 3 – Step 3)
- (1) 2" x 6" (Card 3 – Step 5)

Luxurious Green Pattern & Solid

- (1) 3¾" x 4½" (Card 3 – Step 3)

Luxurious Green Pattern & Solid (b-side)

- (1) 2¼" x 6¼" (Card 3 – Step 5)
- (1) 2¾" x 5¼" (Card 3 – Step 5)

Journaling

- (1) 2⅝" x 4" “Always & Forever” (Card 3 – Step 6)

Journaling (b-side)

- (1) 2⅝" x 4" “Love” (Card 3 – Step 4)

~ Inside of Card No. 5. “Forever Fabulous”



~ Inside of Card No. 6. “From the Heart”

