

TAKE THE Scenic Route



4503260

g45papers.com • ©2026 Graphic 45™

Scenic Route-Card Kit

Everything you need - including card bases, decorative papers, embellishments, and step-by-step instructions! Just add adhesive.

Scenic Route – Peel Back Card Set

Designed by ~ Carla La Vera

Graphic 45® Supplies:

1 pk <i>Scenic Route</i> 8 x 8 Collection Pack	(4503194)
1 pk <i>Scenic Route</i> Chipboard Pieces Tags & Frames	(4503199)
1 pk <i>Scenic Route</i> Stickers	(4503197)
1 pk A2 Cards 4¼" x 5½" with envelopes—Kraft	(4502653)

Tools, Adhesives & Ink:

Paper trimmer, ruler, scissors, scoring tool, bone folder, craft knife, ruler, various adhesives
Optional: coordinating ink & applicator

Notes:

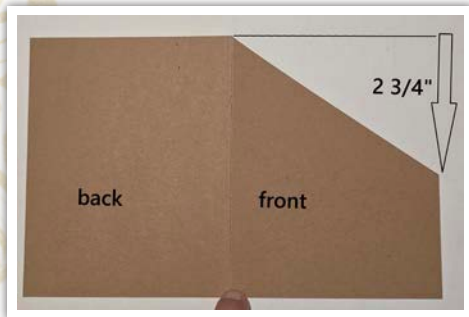
- All measurements are width x height, unless specified.
- When cutting papers, be mindful of the pattern direction.
- These directions are for three cards. The steps are fun and simple. You can create three more cards following the same steps, using the remaining supplies and papers!

Directions:

- General Instructions

These cards have a fun twist! The front has a trimmed section, so you can partially see inside the card. The section is then attached inside the card, giving it a “peeled back” effect. Perfect for this fruity collection!

1. Take each card and trim ¼" in the 5½" direction (our card will have volume and doing this it is going to fit perfectly into the envelopes) and fold the card by the middle in the 9½" direction.

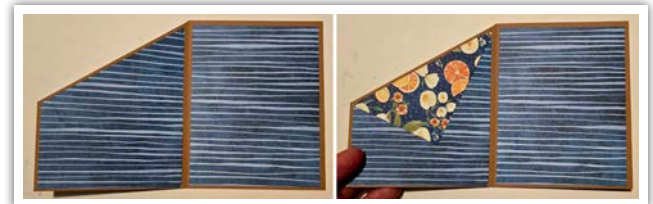


2. Open the card placing the front section to the right, make a mark at 2¾" from the upper corner and trim a line between this mark

and the upper point of the middle of the card.

~ Card No. 1. “Celebrate”

1. Cut a 4" x 5" piece of *Joy in the Journey* paper, make a mark at 2⅝" from the bottom corner and trim a line between this mark and the upper left corner as shown, then, add it to the front section of the card. Save the triangle for step 3.

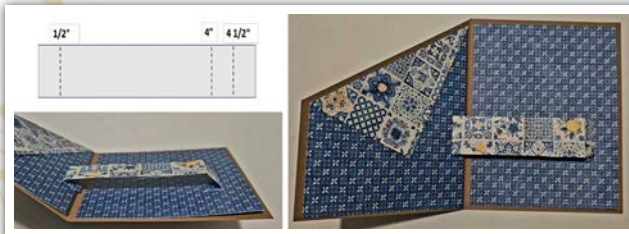


2. Cut a 4" x 5" piece of *Far and Wide* (back) keeping the stripes horizontal. Trim the triangle as shown, open the card and add it to the left section.

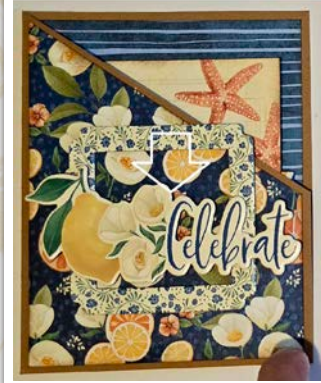
3. Cut a 4" x 5" piece of *Far and Wide* (back) keeping the stripes horizontal and add it to the right section of the card. Add the triangle trimmed in step 1 to the left section as shown.

4. Cut a 5" x 1" piece of *Joy in the Journey* and score three lines as shown. Fold the scored section under the score line and add the left ½" section close to the middle of the card, then, add the other end of this piece

Scenic Route – Peel Back Card Set



($\frac{1}{2}$ " to the right section of the card and be sure you can fold the card properly.



5. Add a Journaling card to the stripe attached on step 4 and add the Stickers shown to the left section over the triangle.

6. Add the square frame (Tags and Frames Chipboard pieces) to the front section of the card, then, add the lemon and the "Celebrate" quote.



7. Cut a $5\frac{1}{2}$ " x $2\frac{5}{8}$ " piece of *Far And Wide* (horizontal stripes), trim slightly the lateral edges to fit in the bottom section of the envelope, adhere and embellish with stickers.



8. Cut a $5\frac{1}{2}$ " x 2" piece of *Joy in the Journey*, trim slightly the lateral edges to fit in the upper flap of the envelope and add it.

~ Card No. 2. "Simply the Best"



1. Cut a 4" x 5" piece of *Scenic Route* (back), make a mark at $2\frac{3}{8}$ " from the bottom corner and trim a line between this mark and the upper left corner same as we did in the Card No. 1, then, add it to the front section of the card. Save the triangle for step 3.

2. Cut a 4" x 5" piece of *Vibrant Orange Pattern & Solids* keeping the stripes horizontal. Trim the triangle as shown, open the card and add it to the left section.

3. Cut a 4" x 5" piece of *Vibrant Orange Pattern & Solids* (back) keeping the stripes horizontal and add it to the right section of the card. Add the triangle trimmed in step 1 to the left section as shown.



4. Cut a 5" x 1" piece of *Scenic Route* (back) and score three lines as shown. Fold the scored section under

Scenic Route – Peel Back Card Set

the score line and add the left $\frac{1}{2}$ " section close to the middle of the card, then, add the other end of this piece ($\frac{1}{2}$ "") to the right section of the card.



5. Add a Journaling card to the strip. Add the Stickers shown to the left section over the triangle.

6. Add the small orange frame (Tags and Frames Chip-board pieces) to the front section of the card, then, add the blue tag and the Flower (bigger).

7. Cut a $5\frac{1}{2}$ " x $2\frac{5}{8}$ " piece *Vibrant Orange P&S* (horizontal stripes), trim slightly the lateral edges to fit in the bottom section of the envelope and add it and embellish with the stickers shown.



8. Cut a $5\frac{1}{2}$ " x 2 " piece of *Scenic Route* (back), trim slightly the lateral edges to fit in the upper flap and adhere.

~ Card No. 3. "Best Day Ever"



1. Cut a 4" x 5" piece of *Live to Travel*, make a mark at $2\frac{5}{8}$ " from the bottom corner and trim a line between this mark and the upper left corner the same as we did in the Card No. 1, then, add it to the front section of the card. Save the triangle for step 3.



2. Cut a 4" x 5" piece of *Live to Travel* (back). Trim the triangle as shown, open the card and add it to the left section.

3. Cut a 4" x 5" piece of *Live to Travel* (back) and add it to the right section of the card. Add the triangle trimmed in step 1 to the left section as shown.

4. Cut a 5" x 1" piece of *Live to Travel* and score three lines as shown. Fold the scored section under the score line and add the left $\frac{1}{2}$ " section close to the middle of the card, then, add the other end of this piece ($\frac{1}{2}$ "") to the right section of the card.



5. Add a Journaling card to the strip and add the Stickers shown to the left section over the triangle.

Scenic Route – Peel Back Card Set



6. Add the medium orange chipboard frame to the front, then, add the blue label and small flower.

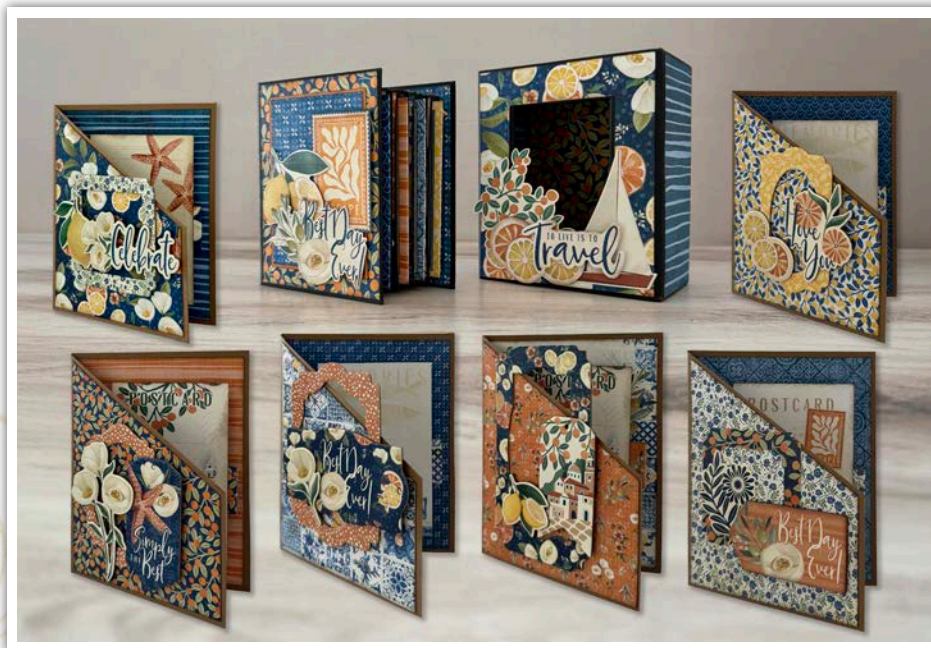
7. Cut a 5½" x 2⅝" piece *Live to Travel* (back), trim slightly the lateral edges to fit in the bottom section of the envelope and add it and embellish it with the stickers shown.

8. Cut a 5½" x 2" piece of *Live to Travel*, trim slightly the lateral edges to fit in the upper flap of the envelope and add it.



You've finished the first three cards of the *Scenic Route* Card Set! An additional three cards can be created using additional supplies in the kit. See the images on the front page and following page for inspiration!

Card Set shown below with the *Scenic Route* ATC Mini Album & Matchbook Box! (Available separately)



Scenic Route – Peel Back Card Set

~ Inside of Card No. 4. "I Love You"



~ Inside of Card No. 5. "Best Day Ever Too"



~ Inside of Card No. 6. Cityscape Tag



Cutting Guide

Measurements are width x height

Joy in the Journey

4" x 5" Card No.1 Step 1
5" x 1" Card No.1 Step 5
5½" x 2" Card No.1 Step 8

Far and Wide

4" x 5" (back) Card No.1 Step 2 (horizontal stripes)
4" x 5" (back) Card No.1 Step 3 (horizontal stripes)
5½" x 2⅝" (back) Card No. 1 Step 7 (horizontal stripes)

Scenic Route

4" x 5" (back) Card No.2 Step 1
5" x 1" (back) Card No.2 Step 5
5 1/2" x 2" (back) Card No.2 Step 8

Vibrant Orange Pattern and Solids

4" x 5" Card No.2 Step 2 (horizontal stripes)
4" x 5" Card No.2 Step 3 (horizontal stripes)
5½" x 2⅝" Card No. 2 Step 7 (horizontal stripes)

Live to Travel

4" x 5" Card No.3 Step 1
5" x 1" Card No.3 Step 5
5½" x 2" Card No.3 Step 8
4" x 5" (back) Card No.3 Step 2
4" x 5" (back) Card No.3 Step 3
5½" x 2⅝" (back) Card No. 3 Step 7